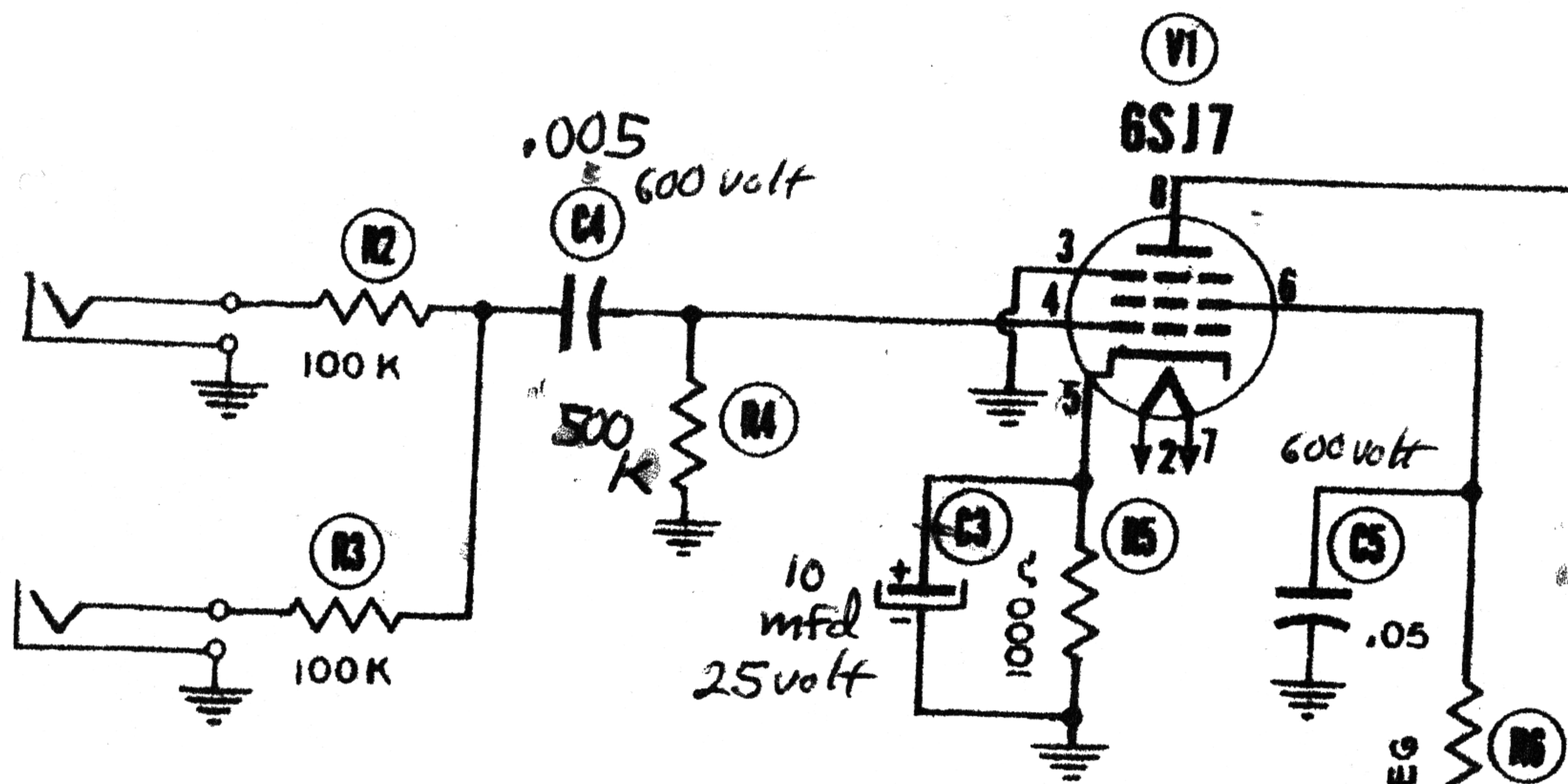
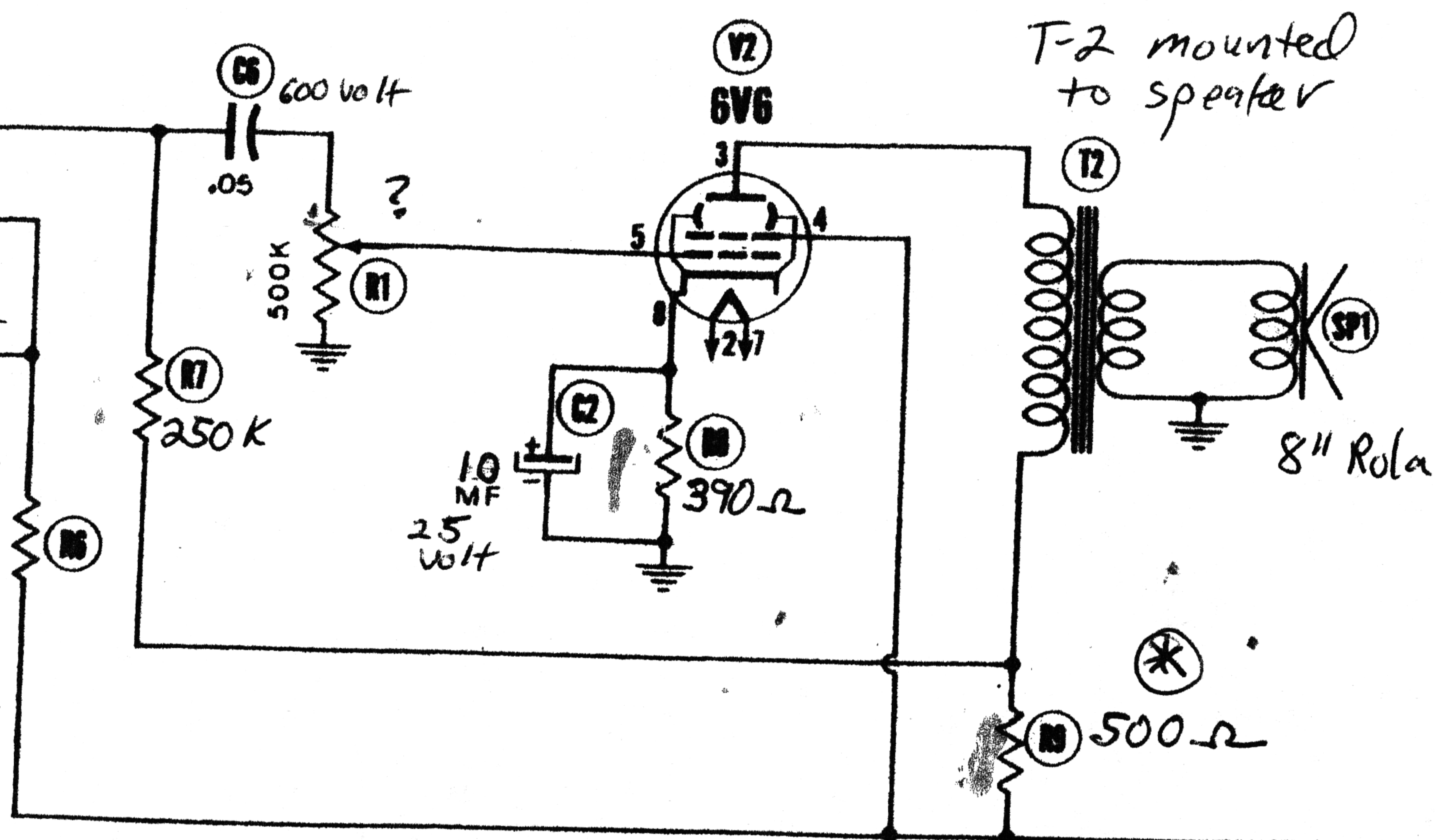


AF AMP.



POWER OUTPUT



T-2 mounted to speaker

Dickerson MOTS Lapsteel Amp 1946

Very Similar to ^{+ Airline 79A} Silvertone 1301!

Tech Notes:

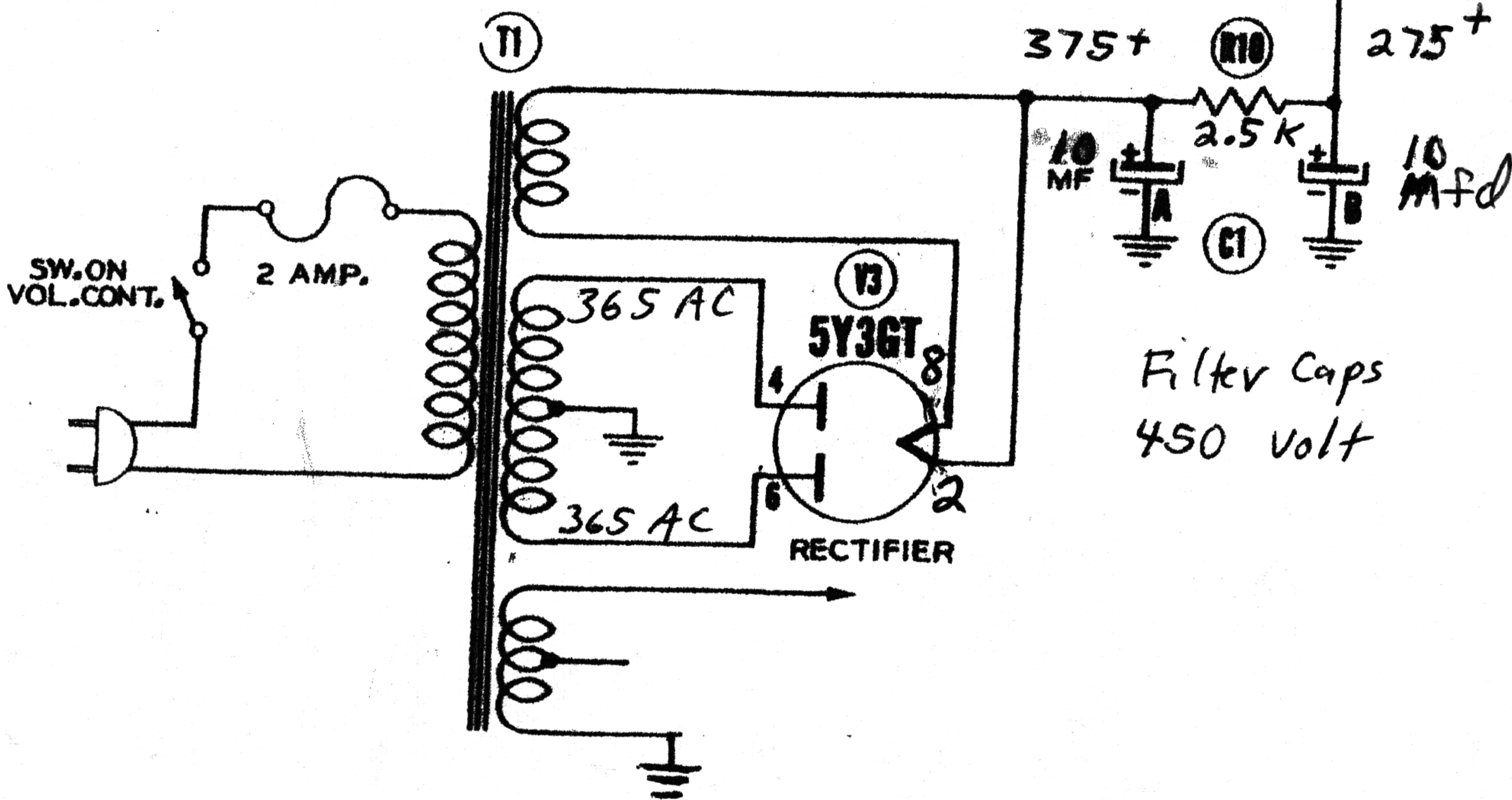
6V6 screen fed B+ before plate, resulting in tame, wimpy ^{tone} sound.

* Move R9 (500Ω) inline with 6V6 screen + Feed 275+ directly to output tranny for more gain + drive

6.3 volt center tap ^{is} not used, but ^{probably} should be, for lower hum (chassis acting as return for filament current)

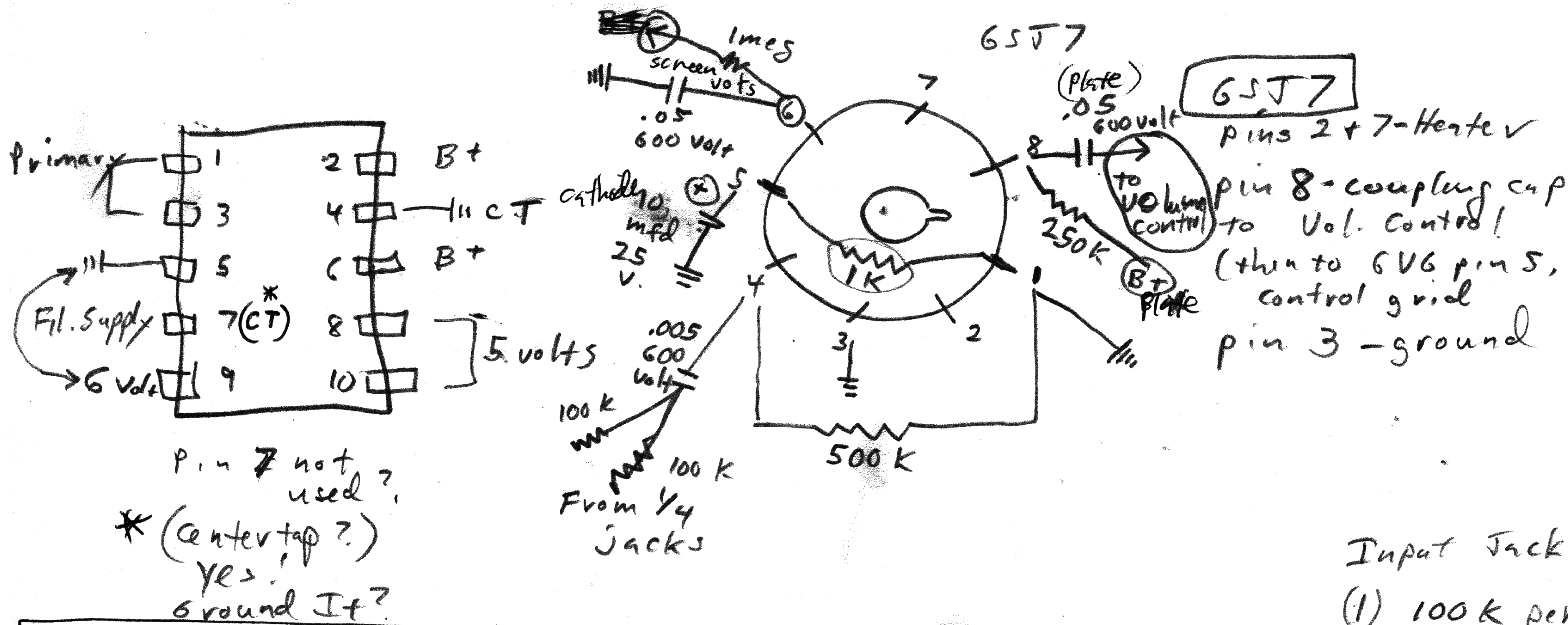
Pin 2 of 5Y3 ^{minus} used as B+, change to Pin 8 if you want to substitute a 5Y4 rectifier for slightly more voltage + headroom

Input Jacks Not Shorting to Ground



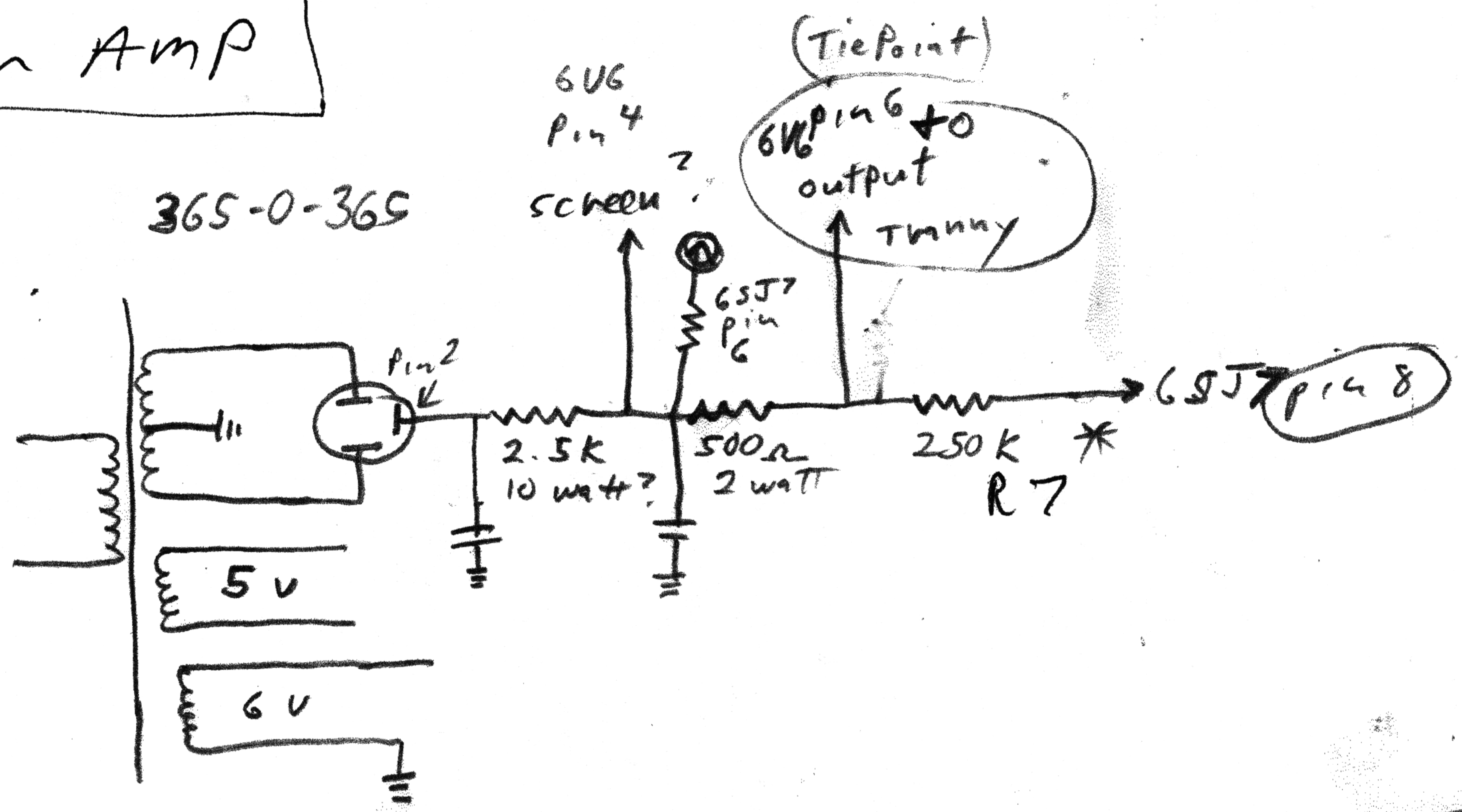
Filter Caps 450 Volt

On-off switch mounted to rear of volume control — induces hum into the output signal. Bypass/remove for lower noise.

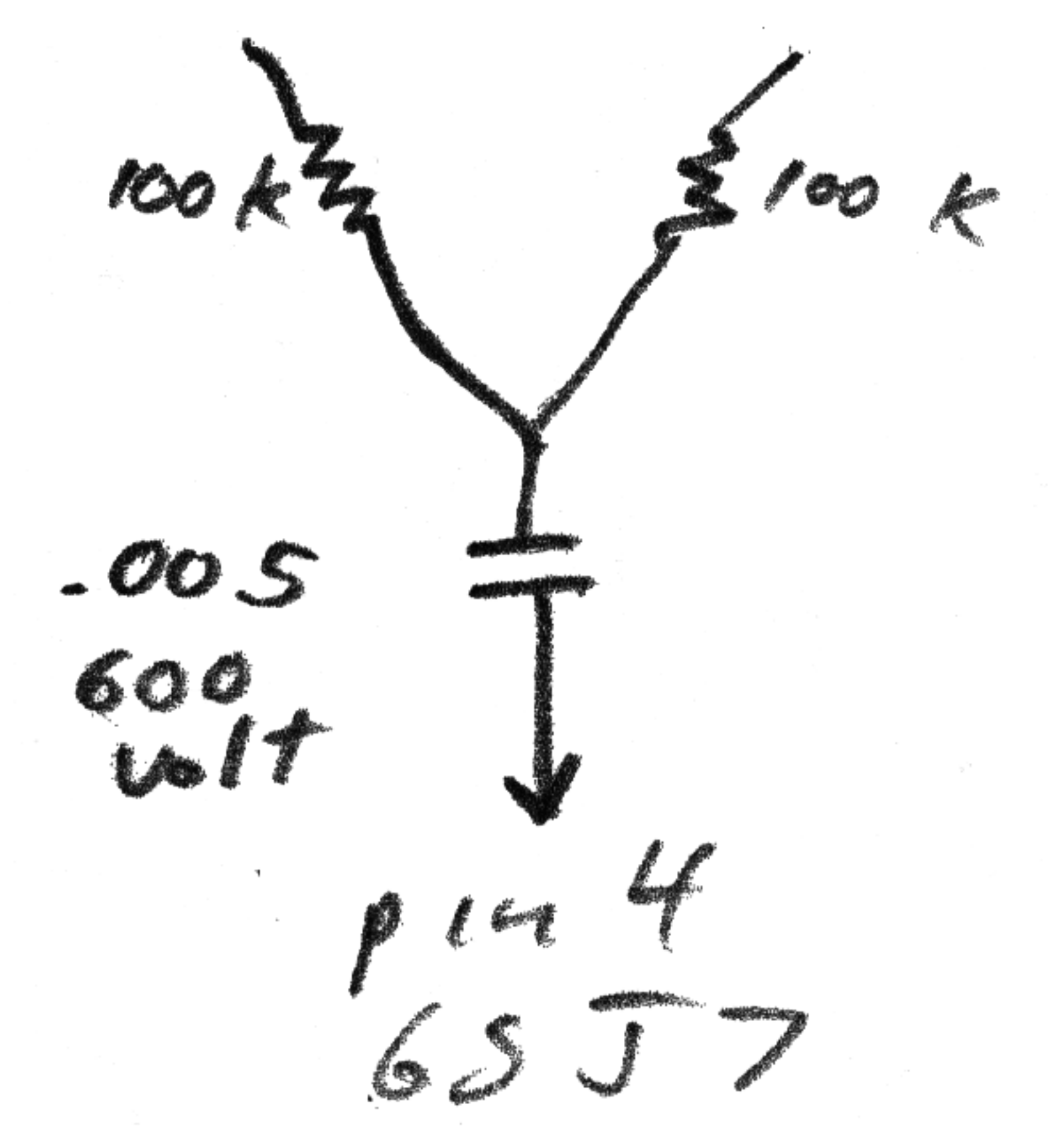


MOTS
 1946 Dickerson Amp

S. Luertone
 1301 is similar.



Input Jacks:
 (1) 100K per Jack;



6V6
 Cathode Resistor 390 ohm
 10 mfd Bypass Added